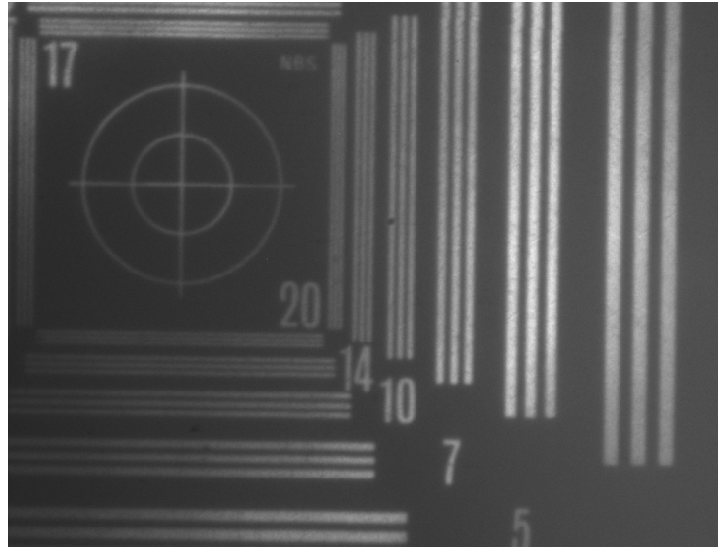


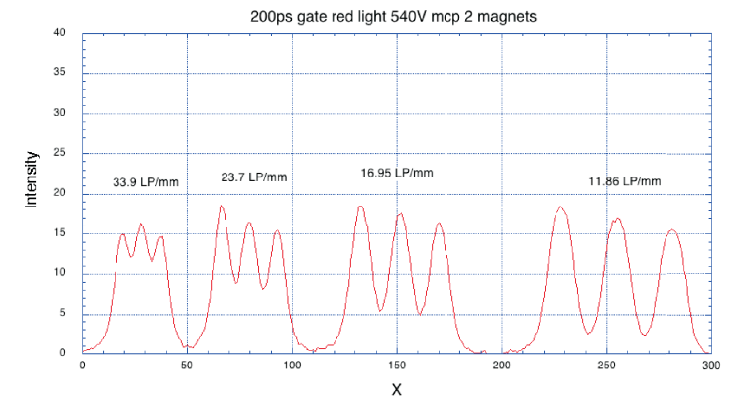
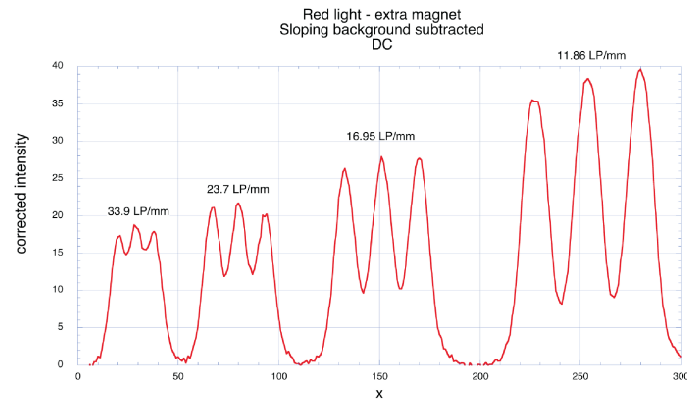
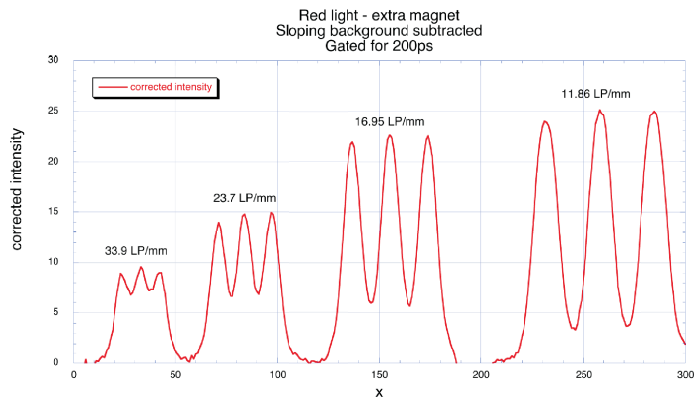
Extra magnet
Red light Gating 200ps
20LP/mm is 33.9LP/mm on cathode.



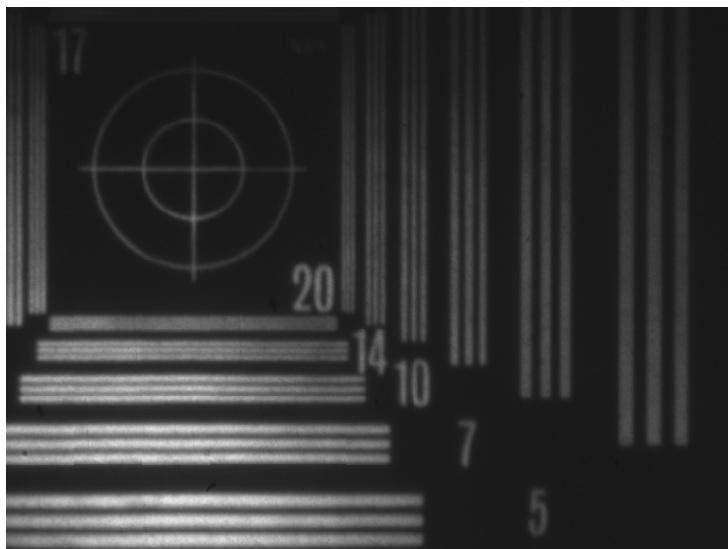
Extra magnet
Red light DC
20LP/mm is 33.9LP/mm on cathode.



Standard two magnets
Red light Gating 200ps
20LP/mm is 33.9 LP/mm on cathode.



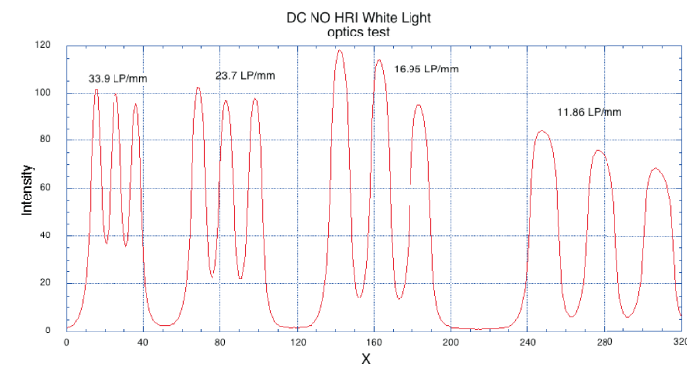
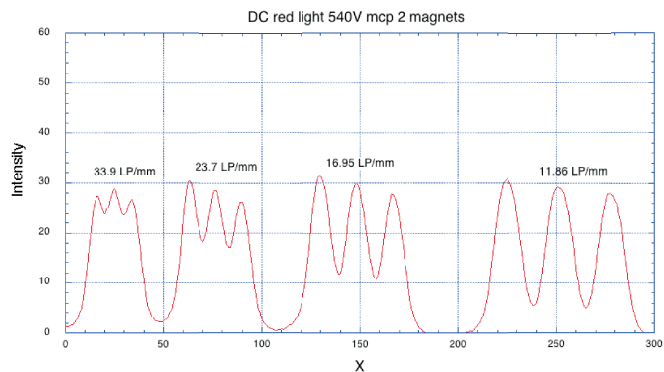
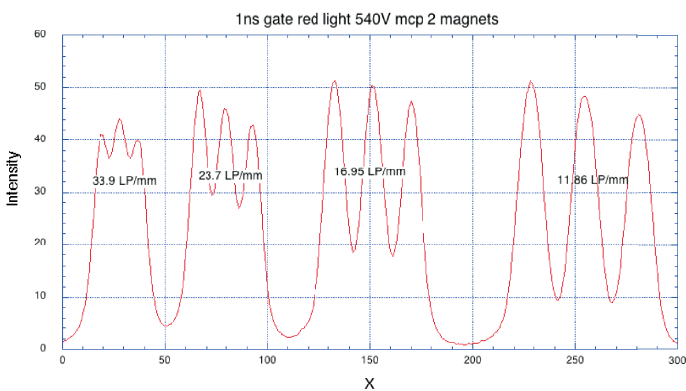
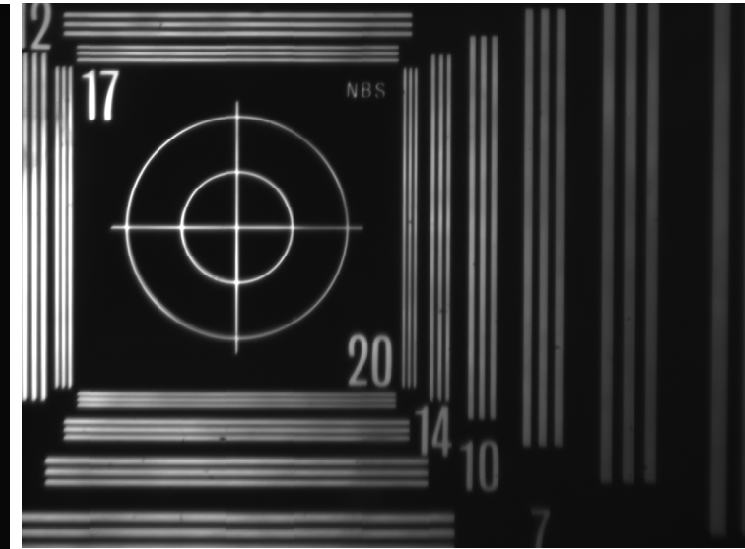
Standard two magnets
Red light Gating 1ns
20LP/mm is 33.9 LP/mm on cathode.



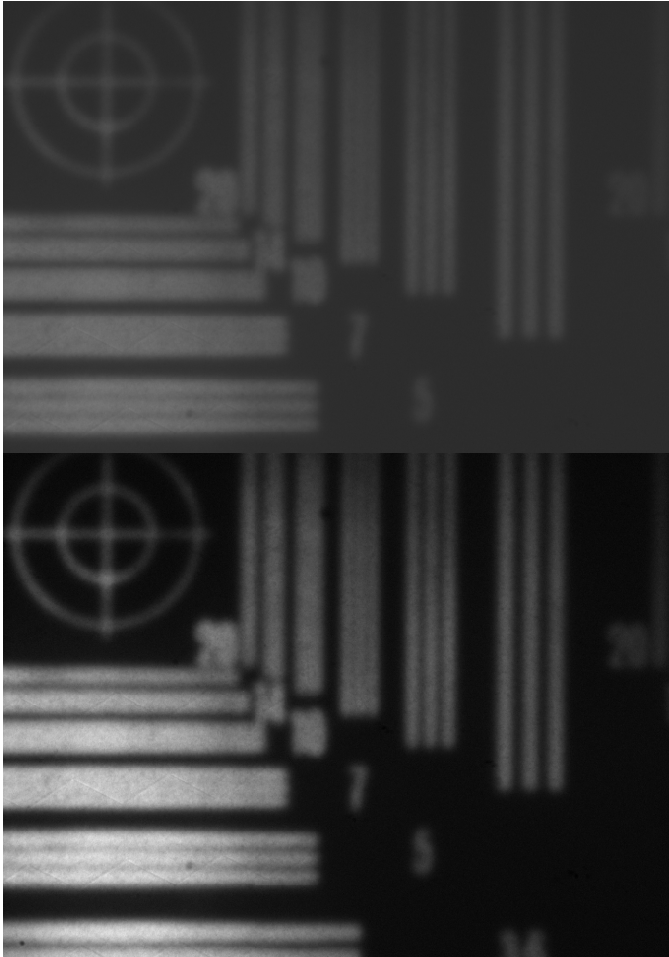
Standard two magnets
Red light DC
20LP/mm is 33.9 LP/mm on cathode.



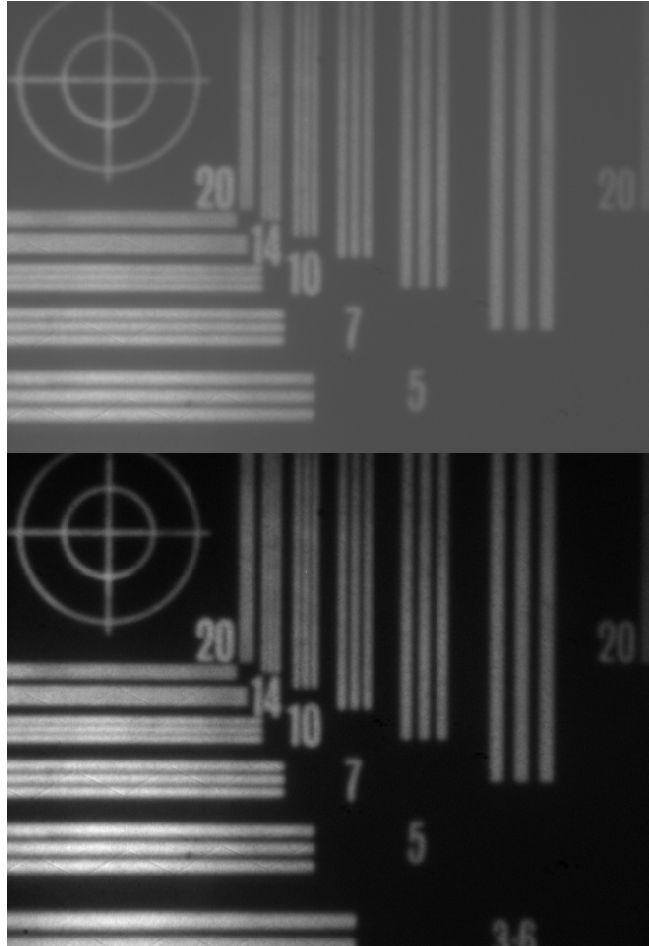
NO HRI - Optics test
White light
20LP/mm is 33.9 LP/mm on cathode.



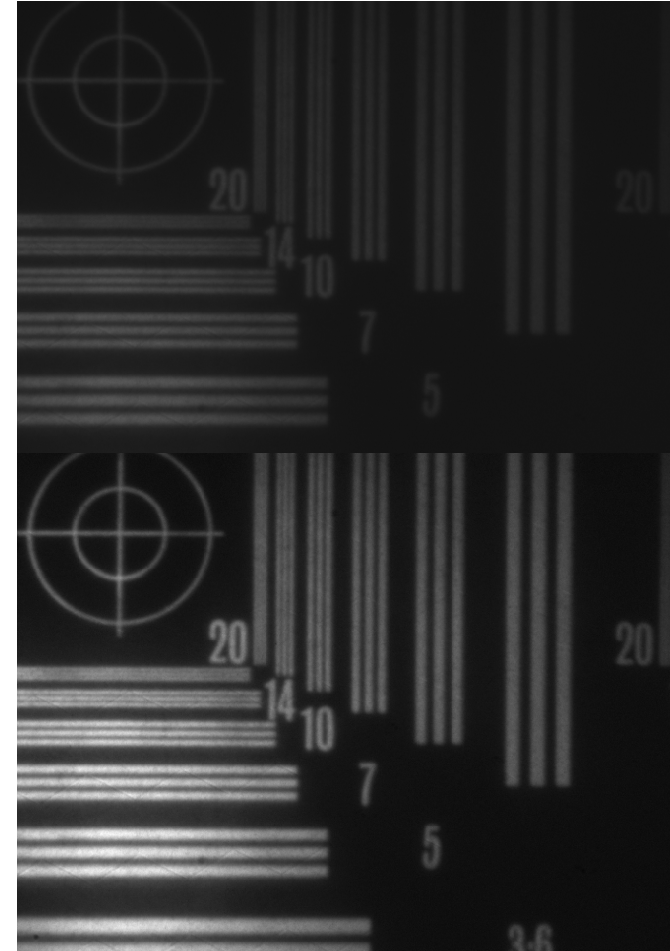
No magnet
Red light
Gating 200ps
20LP/mm is 33.9LP/mm on cathode.



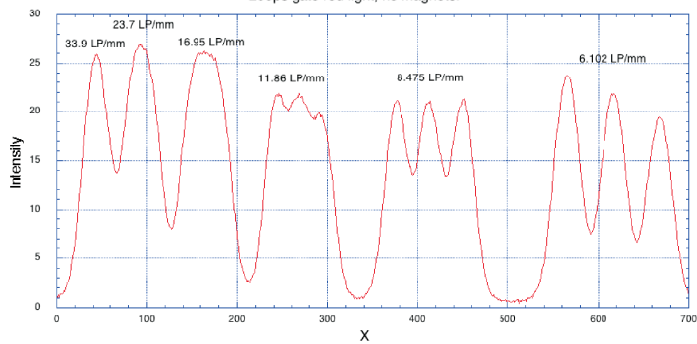
No magnet
Red light
Gating 1ns
20LP/mm is 33.9 LP/mm on cathode.



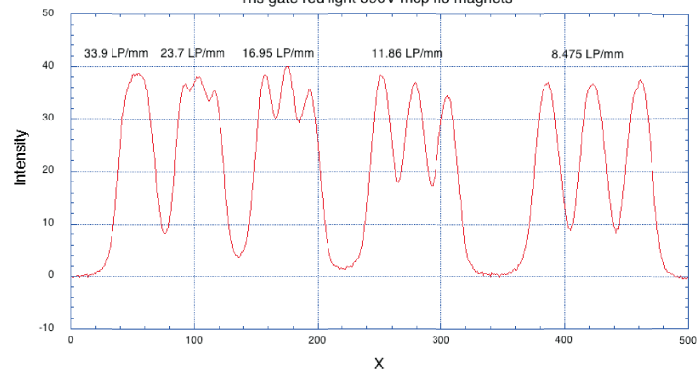
No magnet
Red light
DC
20LP/mm is 33.9LP/mm on cathode.



200ps gate red light, no magnets.



1ns gate red light 590V mcp no magnets



DC 50V on cathode 490V on MCP Optics set up as 24-6-13

